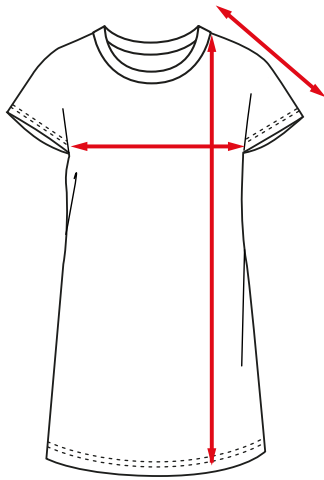


CARLO COLUCCI

Womens Dress (vintage fit)

The right size for you!*



Total length

Place the measuring tape at the highest point of your shoulder and measure the given total length in cm for your size.

Chest measurement

Run the tape measure horizontally under your armpits and over the strongest part of your chest.

Sleeve length

Place the measuring tape at the highest point of your shoulder and measure the given sleeve length in cm for your size.

Our Size	EU	UK	US	FR	IT	Total length (in cm)	Chest measurement (in cm)	Sleeve length (in cm)
34/XS	34	6	XS	36	40	85	96	32
36/S	36	8	S	38	42	87	100	33
38/M	38	10	M	40	44	89	104	35
40/L	40	12	L	42	48	91	108	37
42/XL	42	14	XL	44	50	93	112	38
44/2XL	44	16	2XL	46	52	95	116	40