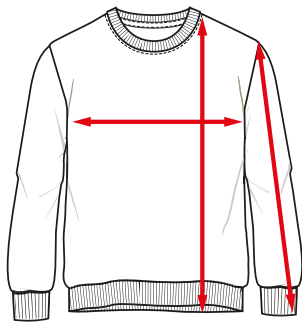


CARLO COLUCCI

Kids pullover (sweat and knit)

The right size for you!*



Total length

Place the measuring tape at the highest point of your child's shoulder and measure up the given total length for your child's size.

Chest measurement

Run the measuring tape horizontally under your child's armpits and over the widest part of the chest.

Sleeve length

Put the measuring tape at the furthest point of your child's shoulder and measure from there approx. to the top center of your child's back hand.

Our Size (in cm)	EU (in cm)	UK (in years)	US (in years)	FR (in years)	IT (in cm)	Total Length (in cm)	Chest measurement (in cm)	Sleeve length (in cm)
110/116	110/116	5-6	5-6	5-6	110/116	47	73	42-44
122/128	122/128	7-8	7-8	7-8	122/128	51	77	46-48
134/140	134/140	9-10	9-10	9-10	134/140	55	83	50-52
146/152	146/152	11-12	11-12	11-12	146/152	59	89	54-56
158/164	158/164	13-14	13-14	13-14	158/164	63	95	58-60
170/176	170/176	15-16	15-16	15-16	170/176	67	103	62-64